

THE CHESAPEAKE



Elevation C CP-C-OR-0993

Shown with optional: Brick on front of garage, living room, foyer window, bedroom 3 and master bedroom; garage door trim, 9' first floor ceilings and dormer



Elevation A CP-A-OR-0991



Elevation B CP-B-OR-0992

Shown with optional: 9' first floor ceilings



Elevation D CP-D-OR-0994

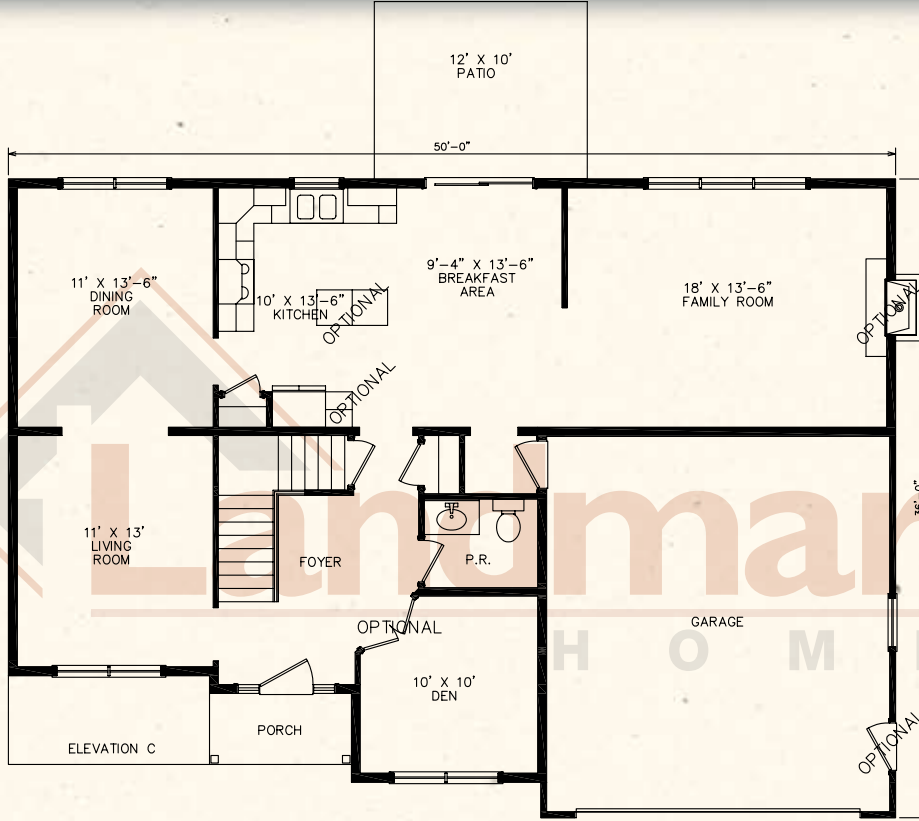
Shown with optional: Standing seam porch roof, garage dormer and window, 9' first floor ceilings and porch arches



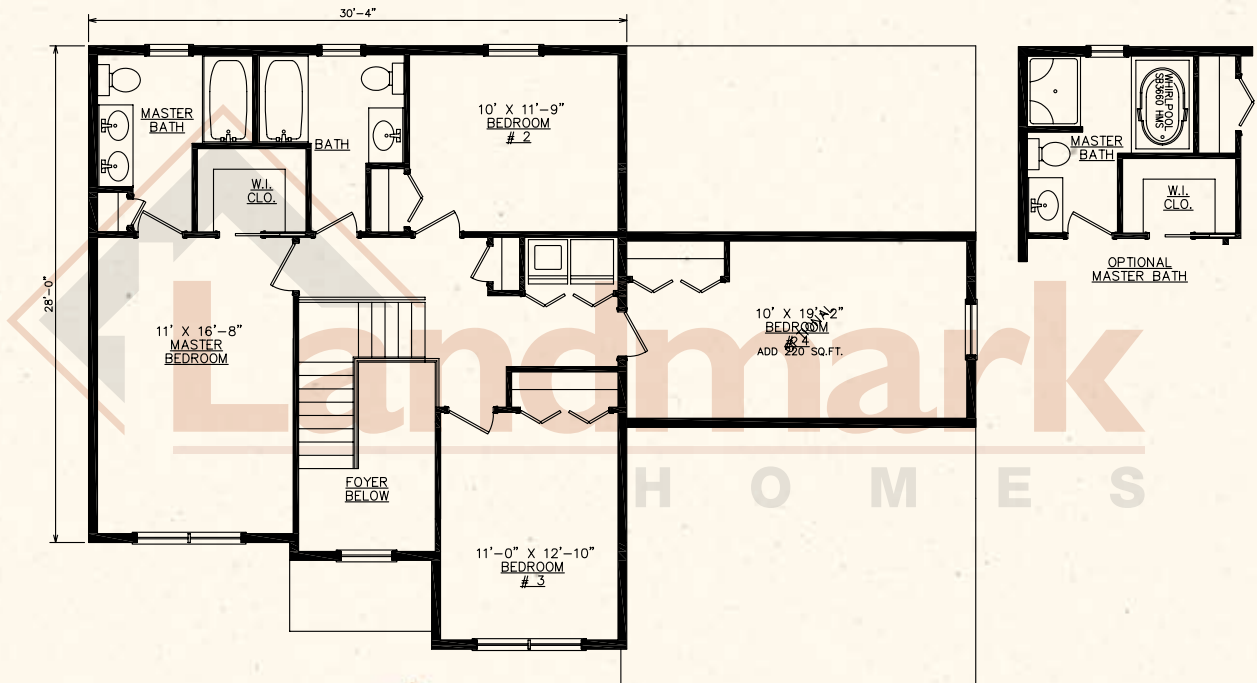
THE CHESAPEAKE

2,132 Square Feet
Two Story ♦ 3 Bedrooms
2½ Baths ♦ 2 Car Garage

First Floor



Second Floor



© 2008 Landmark Builders, Inc. We enforce our Federal copyrights to protect our home buyers. Elevations and landscaping are artists conceptions only. Floor plan may vary depending on elevation selected. Blue prints take precedence over artwork. Some elevations shown with options.

1737 West Main Street • Ephrata, PA • (717) 733-1536

ownlandmark.com