

# THE TYLER



Elevation C  
TY-C-OR-1533

*Shown with optional:* 9 foot ceilings, transom above front door, cedar siding ILO standard siding (front of home only), courtyard wall W/ light, extended shed roof W/ decorative brackets above garage door, unfinished bonus room above garage, garage gable window, 2 garage dormers



Elevation A  
TY-A-OR-1531

*Shown with optional:* 9 foot ceilings, 2 dormers, board and batten shutters, shutter dogs and hinges, porch railing, transom above front door, arch porch beam, cedar siding ILO standard (front of home only)



Elevation B  
TY-B-OR-1532

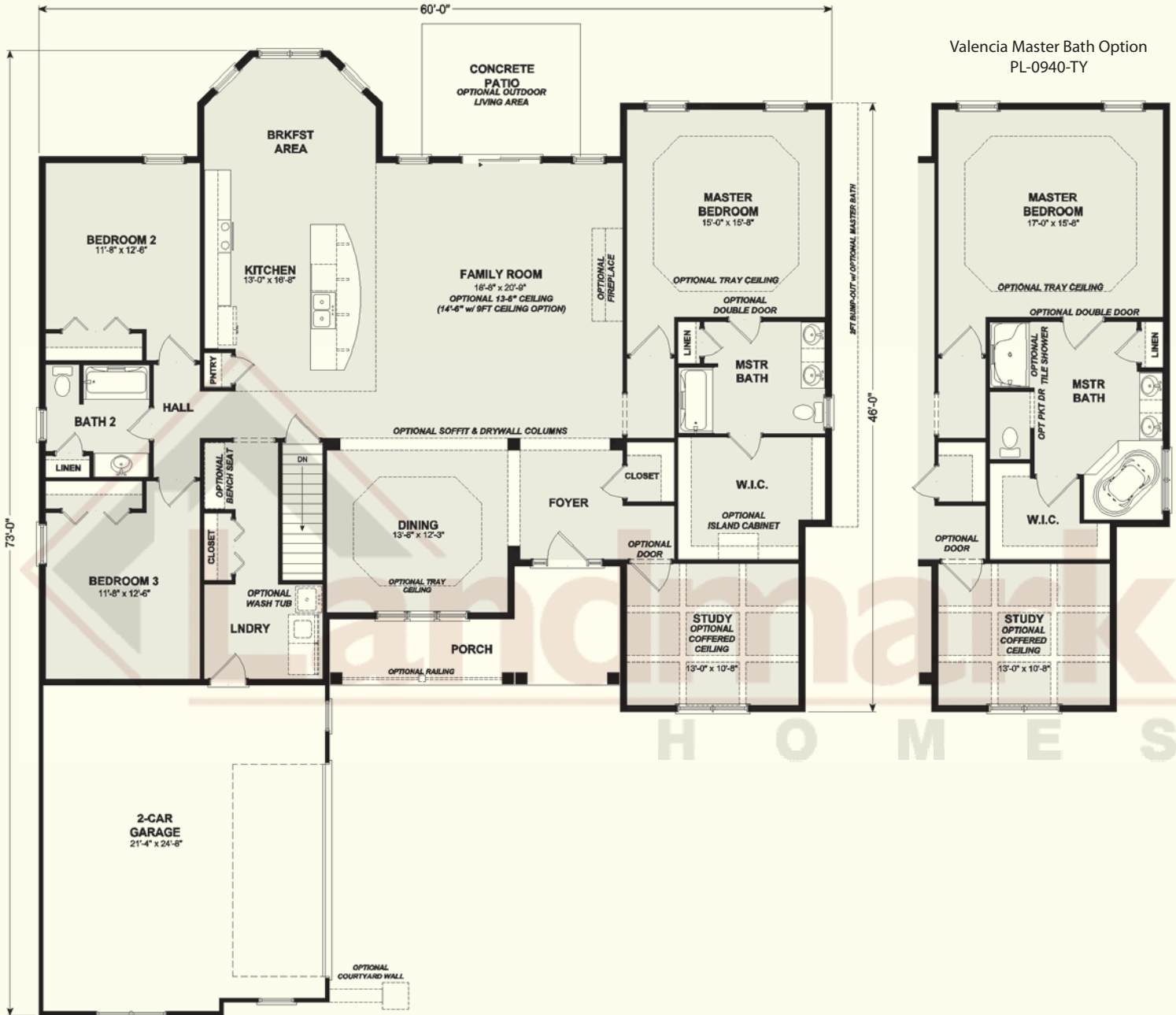
*Shown with optional:* 9 foot ceilings, garage gable window, transom above front door, transoms above study and dining room windows, arched porch beam, porch railing



# THE TYLER

2,486 Square Feet  
 One Story ♦ 3 Bedrooms  
 2 Baths ♦ 2 Car Garage

## First Floor



© 2009 Landmark Builders, Inc. We enforce our Federal copyrights to protect our home buyers. Elevations and landscaping are artists' conceptions only. Floor plan may vary depending on elevation selected. Blue prints take precedence over artwork. Some elevations show with options.

1737 West Main Street • Ephrata, PA • (717) 733-1536  
 OwnALandmark.com