

THE WINDSOR



Elevation A WI-A-OR-0941

Shown with optional: Bump-out with copper roof, custom square porch posts, sideload garage and flexlite on the front



Elevation B WI-B-OR-0942

Shown with optional: Canamold trim over windows, custom porch posts and arches, arched garage doors, palladian window and hip roof



Elevation C WI-C-OR-0943

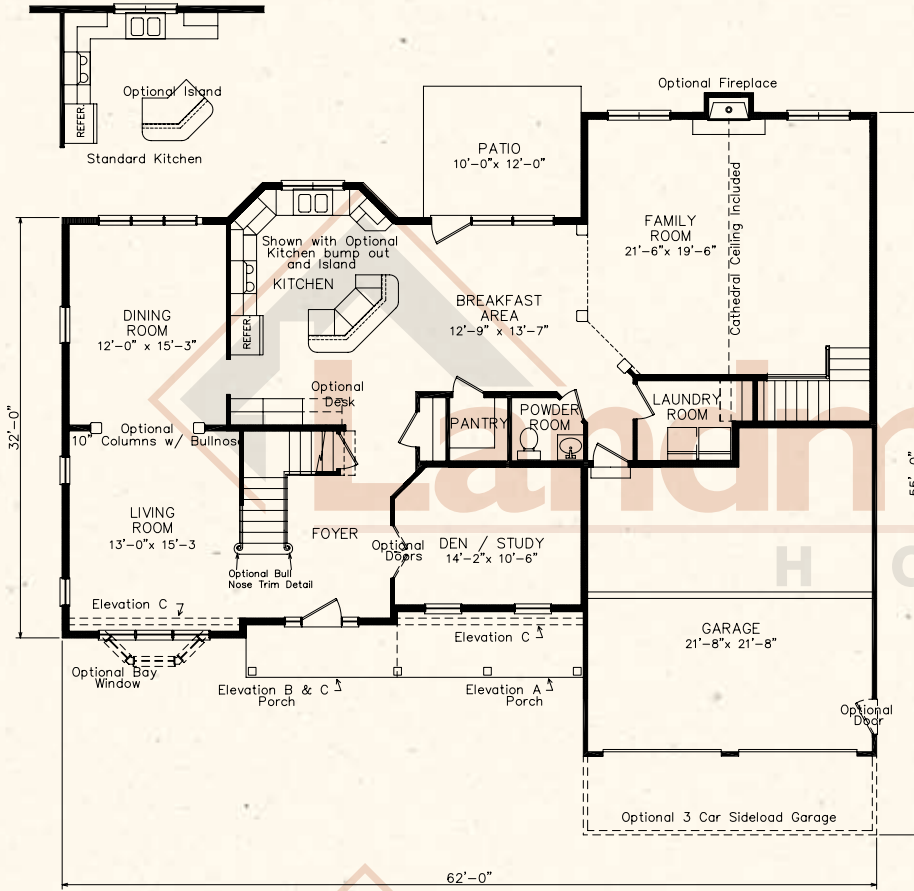
Shown with optional: Custom front porch with columns, elliptical top window over front door, sideload garage and dormers



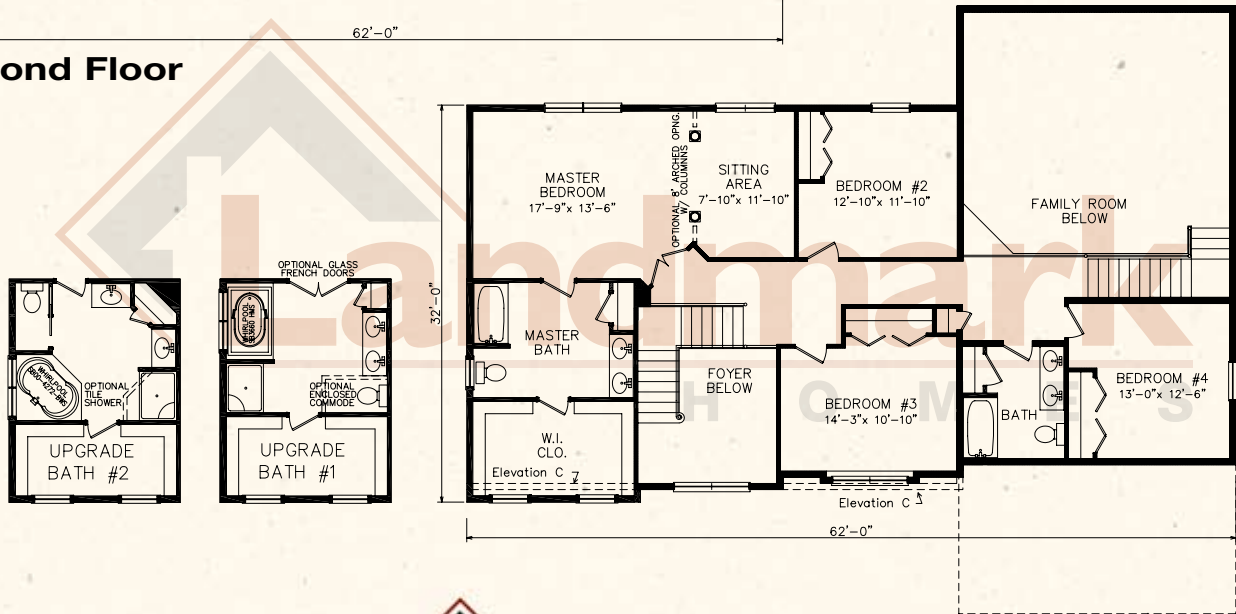
THE WINDSOR

3,410 Square Feet
Two Story ♦ 4 Bedrooms
2½ Baths ♦ 2 Car Garage

First Floor



Second Floor



© 2008 Landmark Builders, Inc. We enforce our Federal copyrights to protect our home buyers. Elevations and landscaping are artists conceptions only. Floor plan may vary depending on elevation selected. Blue prints take precedence over artwork. Some elevations shown with options.